

# ECO365<sup>®</sup>

Sustainable Living



[www.eco365.co.in](http://www.eco365.co.in)



## Awards & Recognitions



- "Indian of The Year 2017" Award for water conservation
- "Green Excellence Award 2018" For innovative green products and technology
- "Best Green Entrepreneur Award 2018" by national awards for excellence in green & waste.
- "Waste Water Management - 2019" online sustainability awards 2019

## Our Clients



## Media Featuring



# SAVE WATER, SAVE MONEY & SAVE ENERGY

**Water efficiency** is reducing water wastage by measuring the amount of water required for a particular purpose and the amount of water used or delivered by plumbing fixtures. Water efficiency differs from water conservation in that it focuses on reducing waste, not restricting use. It also emphasizes the influence consumers can have in water efficiency by making small behavioral changes to reduce water wastage and by choosing more water efficient products.

To make properties water efficient, we investigate the feasibility of the following general options.

- Reduce the flow of water.
- Modify the equipment or installing water saving devices.
- Replace existing equipment with more water efficient equipment.
- Change to a waterless process.

Global organizations like the World Water Council, the International Water Management Institute, and UNESCO have been promoting water efficiency alongside water conservation.

Since 2010, we are helping properties save water with water efficient fixtures. Adoption of our solutions would result in conservation of water and energy, minimize waste, protect environment & contribute health.



## SAVE WATER = SAVE ENERGY = SAVE MONEY

It is important to note that saving water in turn conserves energy. The treating, transporting, and heating of water all take some form of either electricity or gas power, and those costs translate to rising rates on utility bills.

In addition to saving money on your utility bill, water conservation helps prevent water pollution in nearby lakes, rivers, and local watersheds. Conserving water also prevents greenhouse gas emissions associated with treating and distributing water.

Possible savings of water at home with Eco365® water efficient Taps					
Activity	Water usage by tap with standard Aerator(flow rate: 12 L/M)	Water usage by tap with Eco365 Tap(Flow rate: 3 L/M)	Water saved in Litres	Water saved %	Water saved annually by family of 4 with Eco365 Taps
Washing of hand Run time: 45 sec	9 L	2.25 L	6.75 L	75%	39420 (365 days x 4times x 6.75L x 4 members)
Brushing of teeth Run time: 1 min	12 L	3 L	9 L	75%	13140 (365 days x 1 times x 9L x 4 members)
Washing utensils Run time: 10 min	120 L	30 L	90 L	75%	32850 (365 days x 90 Litres)
Runtime & Times of usage could vary case to case basis, Consider ± 10%			Total water saved annually (in litres)		<b>85410</b>

## Water Efficient Taps

Eco365® Taps perform better with less water usage when compared to regular taps. These taps compensate the water pressure and give defined water flow rate, therefore less water wastage & more savings on water bills.



WASH BASIN MOUNT PILLAR COCK - GANGA GREENTAP



Long Nose Bib Cock (Wall Mount & Quarter Turn Brass Tap)

Code: Eco--1605



Pillar Cock (Floor Mount & Quarter Turn Brass Tap)

Code: Eco--1501



Long BodyBib Cock (Wall Mount & Quarter Turn Brass Tap)

Code: Eco--1504



Bib Cock (Wall Mount & Quarter Turn Brass Tap)

Code: Eco--1503



Long Body Bib Cock (Wall Mount & Quarter Turn Brass Tap)

Code: Eco--1404



Pillar Cock (Floor Mount & Quarter Turn Brass Tap)

Eco--1401



Bib Cock (Wall Mount & Quarter Turn Brass Tap)

Code: Eco--1403



Center Hole Basin Mixer (Floor Mount & Quarter Turn Brass Tap)

Code: Eco--1417



Wall Mixer Telephonic With Bend

Code: Eco--1520



Swan Neck Pillar Cock Swinging Spout (Floor Mount & Quarter Turn Brass Tap)

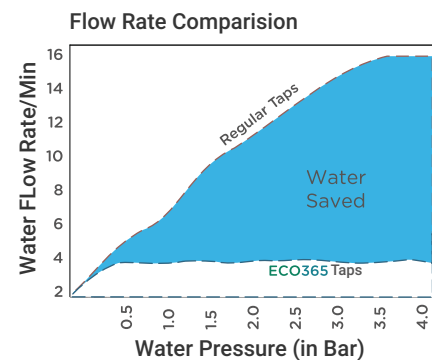
Code: Eco--1615



Wall Mount Tap

Code: Eco--1416

- Saves water Upto 90%
- Saves water & money
- Customized flow rate (3 to 8 LPM)
- Different flow patterns (shower/foam)
- 7 year warranty
- Quality brass material (chrome plated)
- Different range/Style to choose from
- Annual savings upto 22,500 litres/year/tap

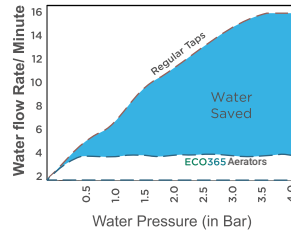


## Water Saving Aerators & Shell

Retrofit existing taps with Eco365® water saving aerators to save water upto 98%. Aerators are small fixtures which can be easily installed on the tap head. Unlike regular aerators, Eco365® aerators are pressure regulated & dispense water at pre-defined flow rates.

- Saves water upto 98%
- Different flow rate & style
- Easy to install & maintain
- No compromise on rinse ability
- Reduces energy and water bills
- Dual flow, anti-theft features available

Flow Rate Comparison



Shower Flow Aerator (Spray)

Code: A2224

Flow Rate: 1.5/2.5/3/4/L/M



Foam Type Aerator

Code: B3332

Flow Rate: 4/6 L/M



6 LPM Foam Flow Aerator

Code: B3348

Flow Rate: 3/4/6 L/M



TinyWater Aerator (Mist Flow)

Code: TW22

Flow Rate: .15~0.6 ml/m



Foam Type Aerator Small (M18)

Code: S1124

Flow Rate: 4/6 L/M



Custom Shower Flow Aerator

Code: B6696

Flow Rate: 3/4/6 L/M



Custom Foam Flow Aerator

Code: V3336B

Flow Rate: 3/4/6 L/M



Dual Flow Aerator

Code: B3338

Flow Rate: 3/4/6 L/M



Anti-Theft Foam Flow Aerator

Code: V3332B

Flow Rate: 3/4/6 L/M



Anti-Theft Shower Flow Aerator

Code: V2224A

Flow Rate: 3/4/6 L/M



Push Type Aerator For Kitchen Sink

Code: E8821

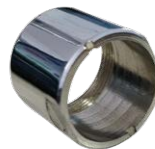
Flow Rate: 3/4/6 L/M



Hygiene Aerator (One Touch On-Off)

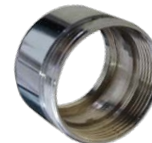
Code: E8821

Flow Rate: 3/4/6 L/M



Female Threaded Shell

Code: F01



Dual Threaded Shell

Code: D01



Male Threaded Shell

Code: M01

## Neo Water Flow Restrictors (NFR)

Flow Restrictors are designed to maintain water pressure while reducing water flow in taps and showers by upto 60%. They are installed on pipelines connecting to taps & shower to restrict the flow rate of water at source.



- Saves water upto 98%
- Water flow rates available: 5 to 8 LPM (litres per minute)
- Recommended for: taps, showers, health faucet guns/hygiene taps
- Annual savings upto: 22,500 litres water/year
- Warranty: 1 year (on manufacturing defects)
- Tools required to fit: wrench & teflon tape/PTFE
- Anti-theft because it require tool to open

## Different Types Of Shower Heads

Regular shower head dispense water around 15 to 20 litres per minute(LPM) or even more, whereas Eco365® shower heads typically flow at 6- 8 Litres per minute (or less!). Thus saving water, energy and money.

- Water savings up to 60%
- No compromise on the rinse ability
- Different flow styles & functions
- Reduces hot water demand;
- Saves energy & reduces cost
- Easy installation (DIY)



**AirOxy Shower Head**  
Code: A01R



**3 Function AirOxy Shower Head**  
Code: A03R



**5 Function Shower Head**  
Code: A05R



**Dual Function Shower Head**  
Code: SH02



**AirOxy Shower Head(Black)**  
Code: SH04



**AirOxy Shower Head(Blue)**  
Code: SH05



**3 Function Shower Head**  
Code: SH05A



**Shower Timer**  
Code: ST02

## Waterless Urinal & Tank Bank - Flush Tank Water Saver

We can help you save 100% water on urinals flushing by using waterless urinal, when you waste less; you also recycle less; that saves energy & money eventually. waterless urinals are hygienic, odorfree and elegant in design.

Green Toilet Bank can save you upto 2 liters of water on every flush. Water filled Tank Bank is installed inside the flush tank to displace an equivalent volume of water used for flushing.



- Saves 100% water on flushing
- Retrofit options available
- Odorless & hygienic
- Easy to install & maintain
- Good for drainlines & STP



- Saving on every flush upto 2.5liters
- Easy to install
- Economical, maintenance free
- Long lasting solution to save water
- Easy to change the volume of the bag
- No interfrance with main flushing system
- Suitable for individuals, residences, offices et

## Rain Water Harvesting Filter

With patented RAINWAY filter it is easy to harvest rain water. It is uniquely designed to be maintenance free with self cleaning mechanism and works on the principle of gravity. It removes suspended particle from rainwater collected on the the roof. Double layer 420 micron 304 grade stainless steel filter cartridge makes it long lasting solution for your property to harvest rain water.



**PATENTED**

**1,00,000+ UNITS SOLD**



- Works on the principle of gravity
- The filter efficiency remains constants
- Various models from 100-15000 sqft roof areas
- Flexibility in pipe connection for any angle and degree
- Warranty 2 years



## Dual Flow Health Faucet Gun



- Switch easily between shower/rain or foam flow.
- Foam flow for washing, vegetables & fruit cleaning & toilet use.
- Rain flow for washing foot, floor, tableware, toilet bowl.
- It can be used as hand shower or in gardens as well.

## Water saving kits for home

Shower flow aerator - 2 no.  
3 Function shower head - 1 no.  
Installation manuals  
Water awareness stickers



Installation manuals  
Water awareness stickers  
Flow restrictor - 2 no.  
Dual flow switch aerator - 2 no.



Dual function shower head -1 no.  
Shower flow aerator - 2 no.  
Installation manuals  
Water awareness stickers

# WHY WASTE WATER WHEN YOU CAN SAVE



**ECO365**<sup>®</sup>  
Sustainable Living

## Neo Systemk

#9, Gudu, Ganapathi Nagar,  
Hoskerekhalli Main Road,  
Bangalore - 560026, INDIA

☎ +91 96861 94711  
✉ [info@neosystemk.com](mailto:info@neosystemk.com)  
🌐 [www.eco365.co.in](http://www.eco365.co.in)